



adaptiv*mini*



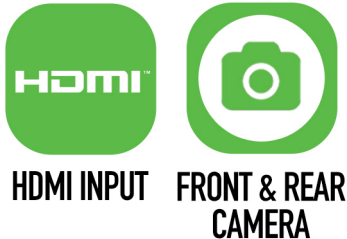
## Adaptiv Mini Fitting & User Guide

Seat, Skoda, Volkswagen  
MIB Platform

[WWW.ADAPTIV-MULTIMEDIA.COM](http://WWW.ADAPTIV-MULTIMEDIA.COM)

## Adaptiv Mini

Adaptiv Mini allows HDMI & Camera input to the OEM screen.



This plug and play, Mini interface adds HDMI to connect your Apple or Android device allowing you to display the contents on the vehicles original screen. Inputs for front and rear aftermarket cameras also come as standard with the Mini.

## Application

For Seat, Skoda and Volkswagen vehicles on MIB Platform with high or low resolution Composition Media touchscreen.

## Kit Includes

Adaptiv Interface, HDMI Adapter.

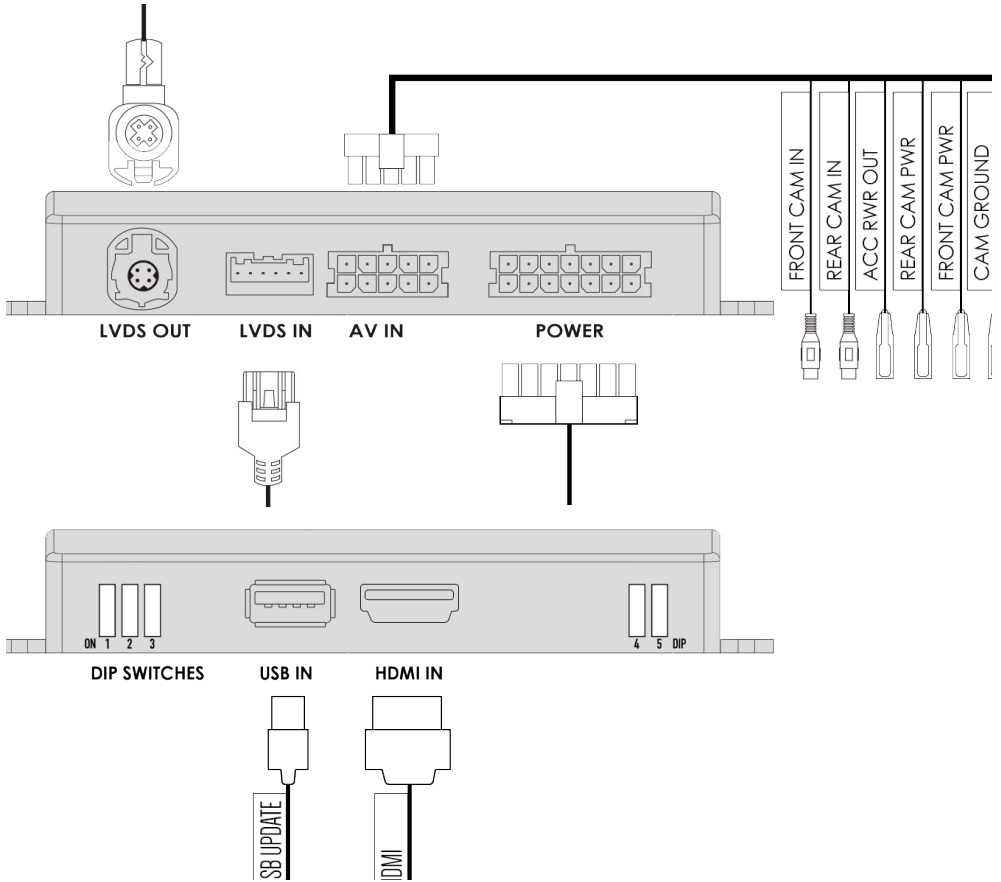
## Prior to installation

Read the manual prior to installation. Technical knowledge is necessary for installation. The place of installation must be free of moisture and away from heat sources. Connects2 cannot be held responsible for the installation of this product.

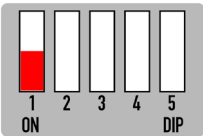
## Technical Support

Connects2 want to provide a fast and suitable resolution should you encounter any technical issues. With this in mind, when contacting Connects2, try to provide as much Information as possible. This will speed up the process and help us to help you.

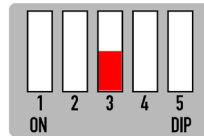
**Please use our dedicated online technical support centre: [support.connects2.com](https://support.connects2.com)**



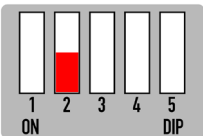
DIP SWITCH SETTINGS



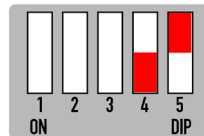
**DIP 1:** Whether the vehicle has OEM reverse camera ( ON: YES OFF: NO )



**DIP 3:** Whether the vehicle has aftermarket reverse camera ( ON: YES OFF: NO )



**DIP 2:** Whether the vehicle has aftermarket front camera ( ON: YES OFF:NO )



**DIP 4:** OEM screen resolution ON for vehicles with 6.5, 7 or 8" display and OFF for vehicles with 5.8" display  
**DIP 5:** OEM screen resolution

## HDMI Access

Select AUX In from the OEM Source Menu. Hold **MEDIA** Button for 2 seconds to switch between OEM screen and Adaptiv mini HDMI screen.



## Video In Motion Warning - 10 KPH

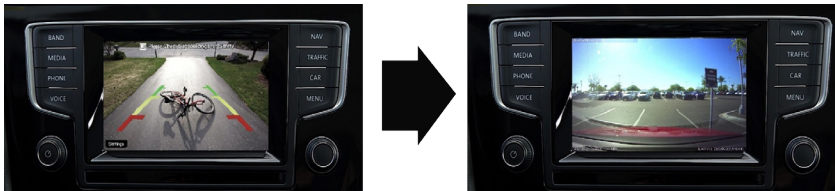


Hold **MENU** Button ( or press top right corner of touch screen ) to disable the video in motion warning message

## Rear and Front Camera Access

From either HDMI mode or OEM mode

1. Select reverse gear for reverse camera
2. Deselect reverse gear - will go to after market front camera ( if DIP 2 ON )  
Press top right corner of screen to cancel front Camera or Driver over 10 KPH



## Front Camera Access

Hold **MENU** Button for 2 seconds to enter the front camera screen ( if DIP 2 is ON )

## View Version Number

Hold **MEDIA** Button for 8 seconds to enter firmware information Screen