

## Adaptiv Mini Fitting & User Guide

ADVM-PSA2 - PSA Vehicles 2016>

For Vehicles with 7"/8" Screens & OEM Aux Input

## Adaptiv Mini

Adaptiv Mini allows HDMI & Camera input to the OEM screen.

This plug and play Mini interface adds HDMI to connect your Apple or Android device, allowing you to mirror your smartphone display on the vehicle's original screen. Inputs for front and rear aftermarket cameras also come as standard.



**HDMI INPUT**



**FRONT & REAR  
CAMERA**

## Application

For vehicles with 7"/8" screens.

For vehicles with OEM Aux input only.

Compatible with vehicles with OEM Bluetooth, however the device will be temporarily disconnected from the vehicle whilst in HDMI mode. Please see Page 4 for more details.

### Citroen

|                     |       |
|---------------------|-------|
| Berlingo (III, K9)  | 2018> |
| C3 (III, B618)      | 2017> |
| C3 Aircross (A88)   | 2017> |
| C5 Aircross         | 2017> |
| DS4 Crossback       | 2016> |
| C4 Cactus (2nd Gen) | 2018> |

### Peugeot

|               |       |
|---------------|-------|
| 3008          | 2016> |
| 5008          | 2016> |
| 508 (2nd Gen) | 2019> |
| Rifter        | 2018> |

## Kit Includes

Adaptiv Interface  
Vehicle Harness

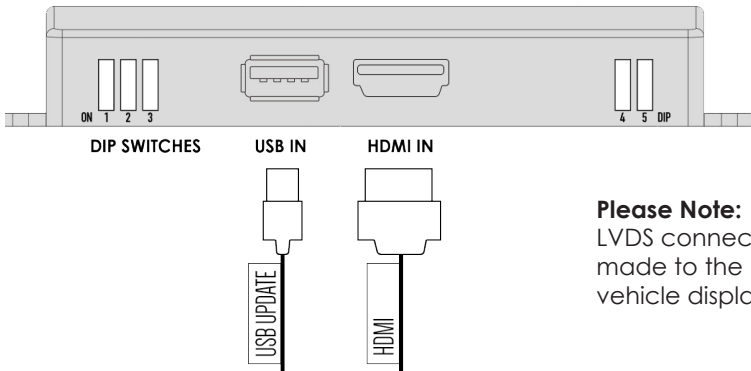
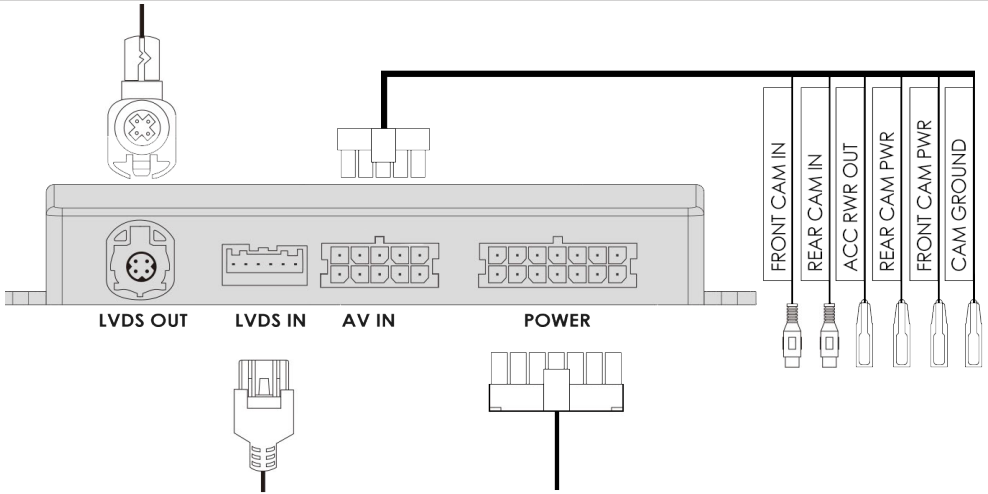
## Prior to installation

Read the manual prior to installation. Technical knowledge is necessary for installation. The place of installation must be free of moisture and away from heat sources. Connects2 cannot be held responsible for the installation of this product.

## Technical Support

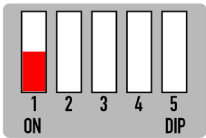
Connects2 want to provide a fast and suitable resolution should you encounter any technical issues. With this in mind, when contacting Connects2, try to provide as much information as possible. This will speed up the process and help us to help you.

**Please use our dedicated online technical support centre: [support.connects2.com](https://support.connects2.com)**

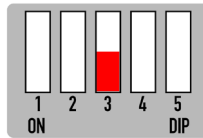


**Please Note:**  
LVDS connections must be made to the back of the vehicle display

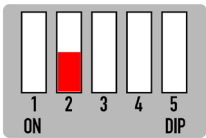
DIP SWITCH SETTINGS



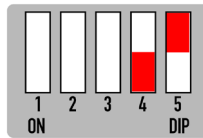
**DIP 1**  
If the vehicle has OEM reverse camera  
( ON: YES OFF: NO )



**DIP 3**  
If the vehicle has after-market reverse camera  
( ON: YES OFF: NO )



**DIP 2**  
If the vehicle has after-market front camera  
( ON: YES OFF:NO )



**DIP 4\***  
Config 1 - ON  
Config 2 - OFF  
**DIP 5**  
OFF

*\*NB: Whether the interface needs to be set to Config 1 or 2 is determined by the vehicle model. When installing the product, simply set the dipswitch to 'ON' and then proceed with the installation. If the Adaptiv Mini is unresponsive, disconnect and set the dipswitch to 'OFF' to try Config 2.*

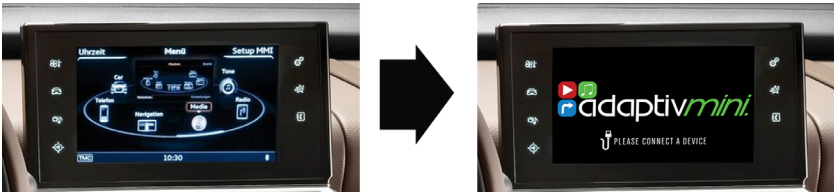
## Button Configuration



**List/Menu Button**

## HDMI Access

Select Aux In from the OEM source menu.  
 Hold **LIST/MENU** Button for 2 seconds to switch between OEM screen and Adaptiv Mini HDMI screen



**Note:** If the vehicle has OEM Bluetooth functionality and a device is paired to the vehicle, entering HDMI mode will temporarily disconnect it. The phone will automatically reconnect to the vehicle after returning to OEM mode.

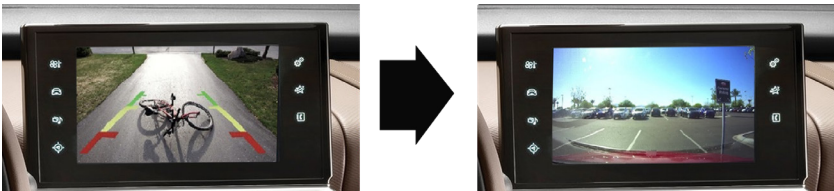
## Video In Motion Warning - 10 MPH

Double press **LIST/MENU** Button to disable the video in motion warning message

## Rear and Front Camera Access

*From either HDMI mode or OEM mode*

1. Select reverse gear for reverse camera
2. Deselect reverse gear - will go to after market front camera ( if DIP 2 ON )  
 To cancel front camera drive over 10 MPH or double press **LIST/MENU** Button



## Front Camera Access

Double press **LIST/MENU** Button to enter the front camera screen ( if DIP 2 is ON )  
 Double press **LIST/MENU** Button to exit front camera

## View Version Number

Hold **LIST/MENU** Button for 8 seconds to enter firmware information screen